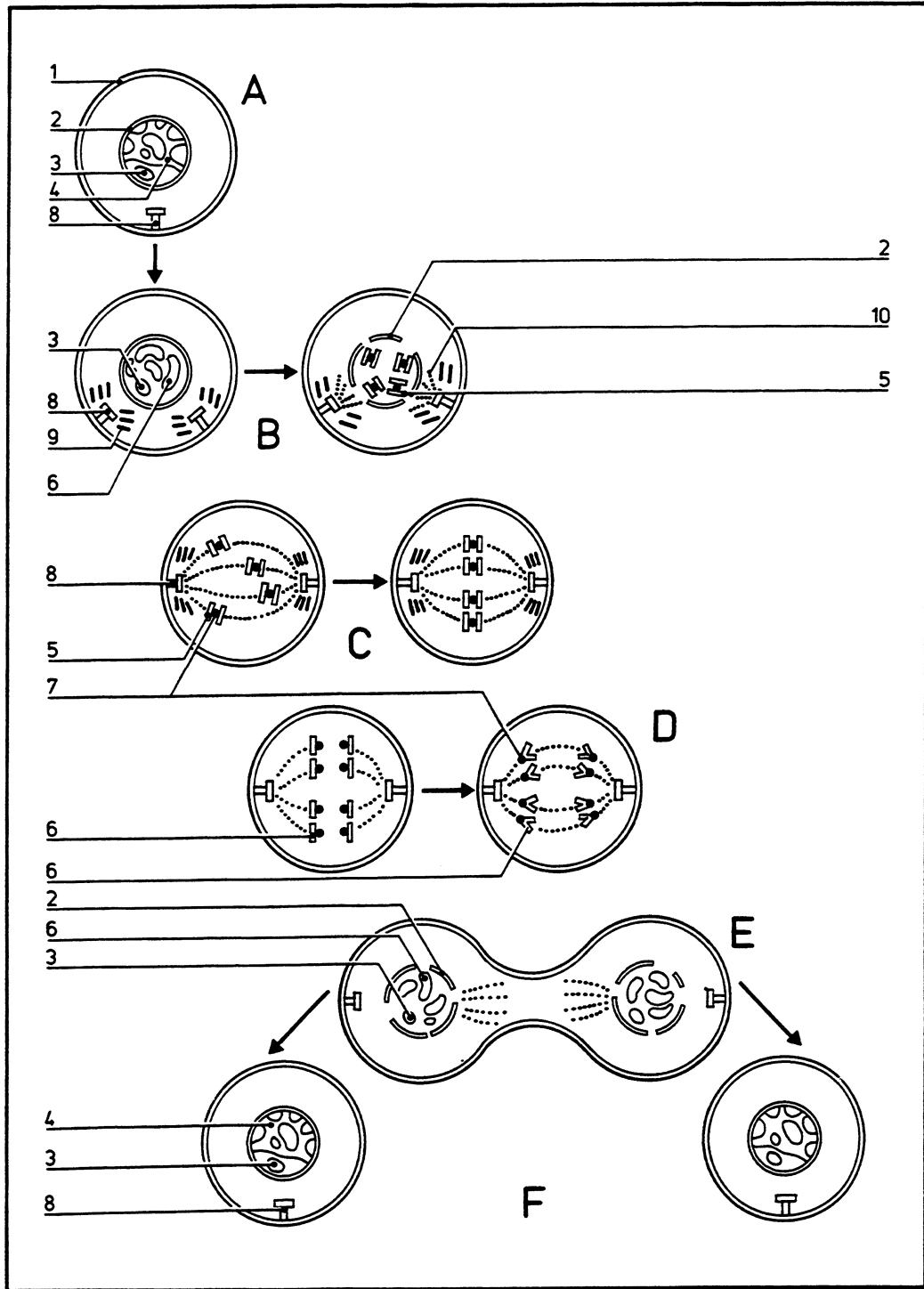


Cell division (mitosis)

02.002



©DIAGRAM

- | | | | |
|---|----------------|----|----------------|
| A | Interphase | 4 | Chromatin |
| B | Prophase | 5 | Chromatids |
| C | Metaphase | 6 | Chromosomes |
| D | Anaphase | 7 | Centromeres |
| E | Telophase | 8 | Centrioles |
| F | Daughter cells | 9 | Asters |
| | | 10 | Spindle fibers |

- | | |
|---|------------------|
| 1 | Cell membrane |
| 2 | Nuclear membrane |
| 3 | Nucleolus |